

Setting Up Environment

Introduction

This is a simple overview of getting the Oracle Query Analyser client to talk to your Oracle server. It is not a definitive guide to Oracle connectivity. If these basic steps are followed, you will be able to quickly get up and running with OQA.

Overview

Each client creates a ServiceName and uses this information to connect to a Listener on the server. The Listener, configured with the same address information, receives the request from the client. If the Listener is listening for requests to the same database service as specified in the client's connect descriptor, a connection is granted.

Listener Setup

The Oracle server will need to have a Listener agent configured to listen on same protocol and port (if applicable) as connecting clients. The Listener service must be started to process connection requests (use LSNRCTL command line tool or Oracle GUI tools if available). Windows users can start and stop the service in control panel.

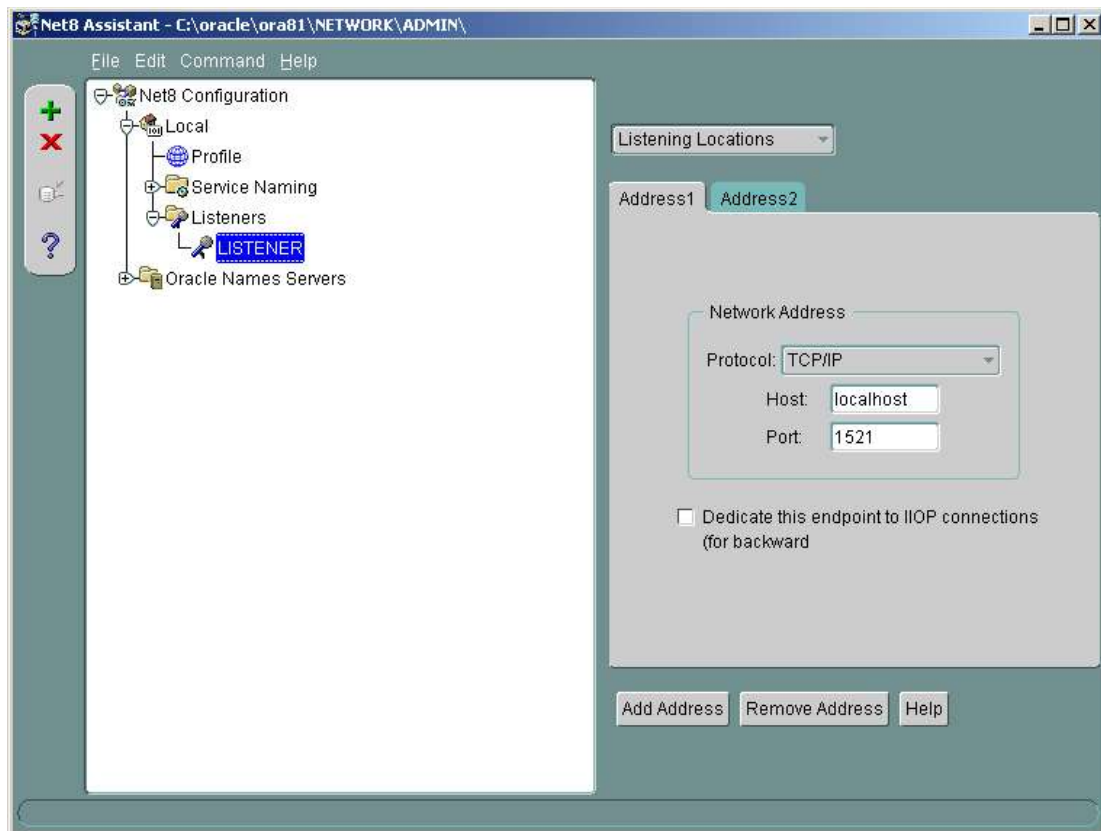


Fig1 (Set up Listener on Oracle Server)

Client Setup

Connecting clients - those required to run Oracle Query Analyser, will need to have a service name set up using Net(x)/SQLNet assistant on each client required to run OQA. Net8/SQLNet will have to be installed if it is not present on the client as part of the client connectivity tools which ship with the Oracle server software. It is also available from Oracle at <http://otn.oracle.com/software/index.html>

A ServiceName is a connect descriptor that the client uses to connect to a database or service. Local naming stores net ServiceNames and their connect descriptors in a local tnsnames.ora file.

If Oracle Server is running on the same machine then Host Name can be set to 'localhost'.

- SID is the database name you wish to connect to when you use this service name in connection strings etc.
- Host Name is the Netbios name of the Oracle Server where the database resides (where the Listener service is running).
- Protocol and Port must match those set up for the Listener service on the server.

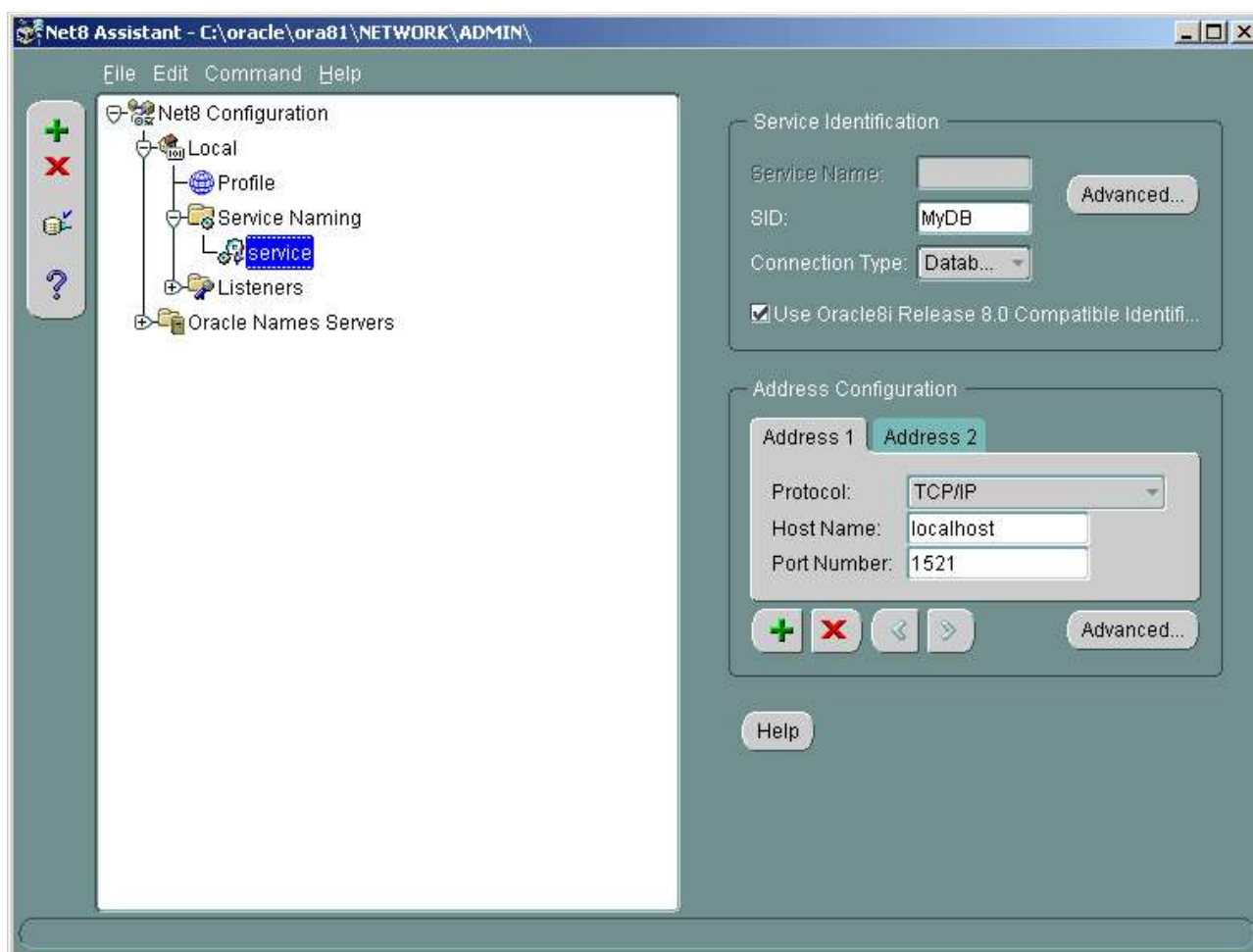


Fig 2 (Configure a ServiceName on Client)

Logging On Using Oracle Query Analyser

The Oracle Query Analyser Login 'Service Name' is the name assigned to the ServiceName configured in previous step.

User Name is the name of a valid user of the database. Password is the user's password.



FirstCMS Oracle Query Analyser Database Login

User Name: app

Password: *****

Service Name: service

OK Cancel

Fig 3 (Logging on Using OQA)